



DIAMOND
PROPERTIES

OFFICE BUILDING

100 S. Bedford Rd. | Mt. Kisco, NY



BUILDING FEATURES

- Strong Ownership
- On-site Cafe + Day Care
- Card Access 24/7
- Near Saw Mill Parkway, I-684
- Near Metro North Train Station
- Luxury Executive Suites w/ Wood Paneling and Vaulted Ceiling

Space A:

Up to 7 Windowed Offices

Space B:

Extraordinary Finishes W/ Private Elevator

Space C:

Top Floor W/ Beautiful Views

For more information about features & amenities, visit diamondproperties.com

AVAILABLE SPACE

Space A: 1st Floor	3,250 SF
Space B: 2nd Floor	2,449 SF - 9,412 SF
Space C: 3rd Floor	5,533 SF

POSSESSION

Immediate

PRICING

Negotiable Market Rents

For more information, visit diamondproperties.com or contact:

TED GROGAN

914-773-6264
tgrogan@dpmgt.com

MARK BLANDFORD

914-773-6242
mark@dpmgt.com

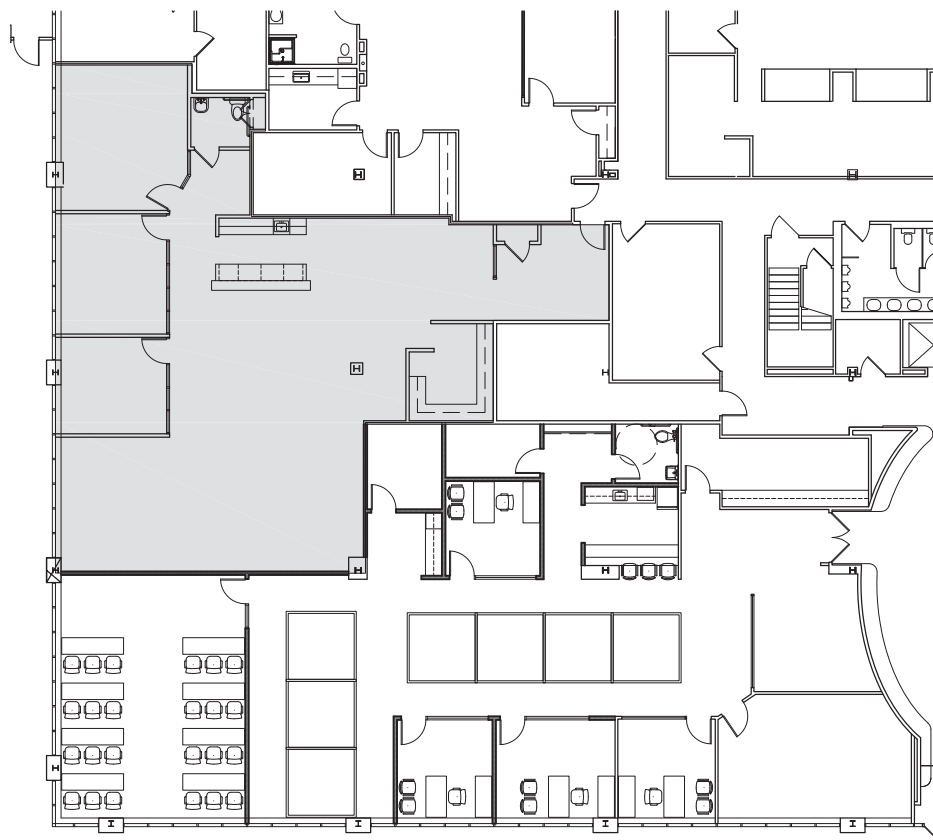


DIAMOND
PROPERTIES

OFFICE BUILDING

100 S. Bedford Rd. | Mt. Kisco, NY

Space A: First Floor (3,250 SF)



Key Plan, First Floor



For more information, visit
diamondproperties.com
or contact:

TED GROGAN

914-773-6264
tgrogan@dpmgt.com

MARK BLANDFORD

914-773-6242
mark@dpmgt.com

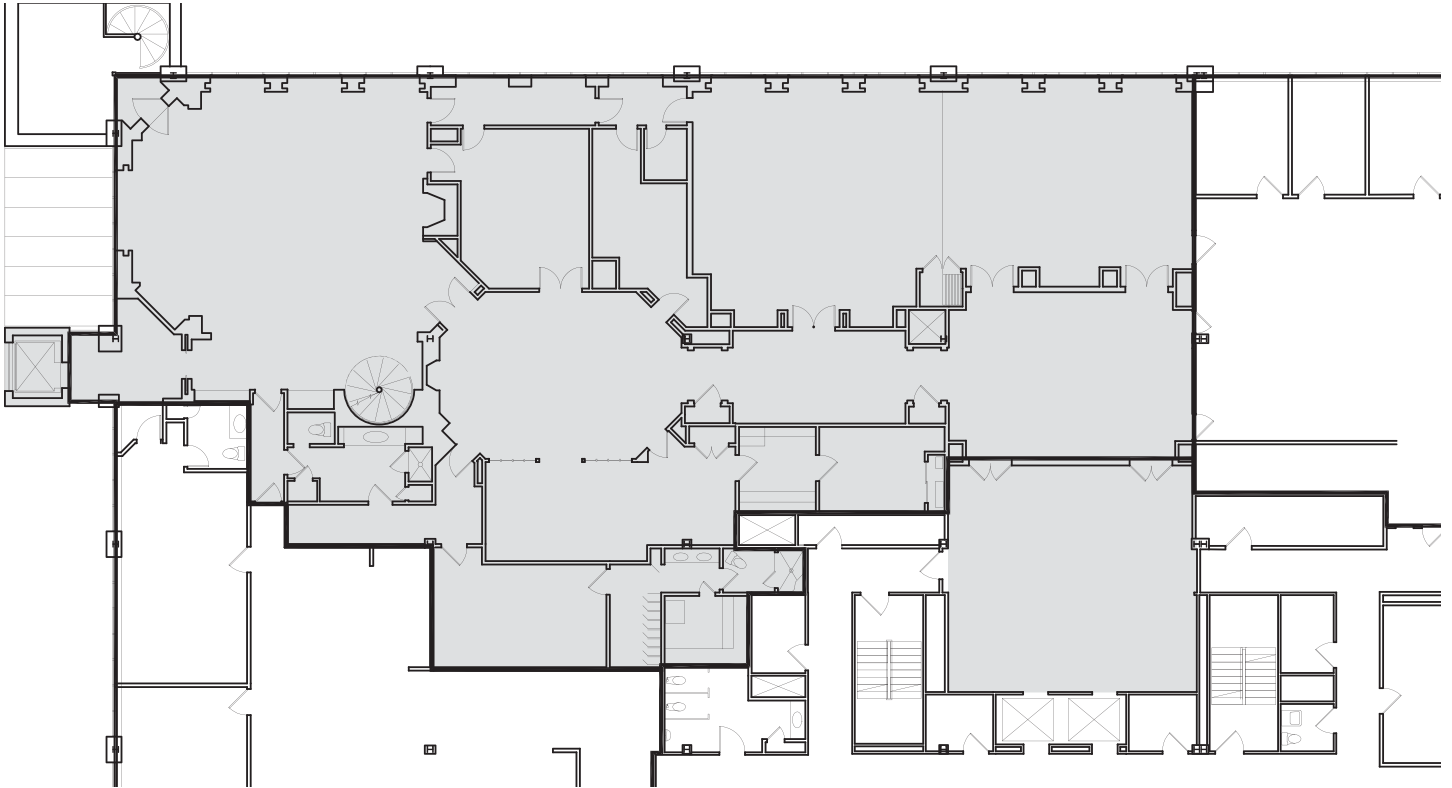


DIAMOND
PROPERTIES

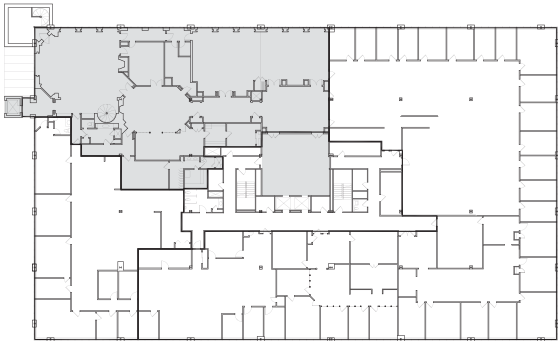
OFFICE BUILDING

100 S. Bedford Rd. | Mt. Kisco, NY

Space B: Second Floor (2,449 SF - 9,412 SF)



Key Plan, Second Floor



For more information, visit
diamondproperties.com
or contact:

TED GROGAN

914-773-6264

tgrogan@dpmgt.com

MARK BLANDFORD

914-773-6242

mark@dpmgt.com

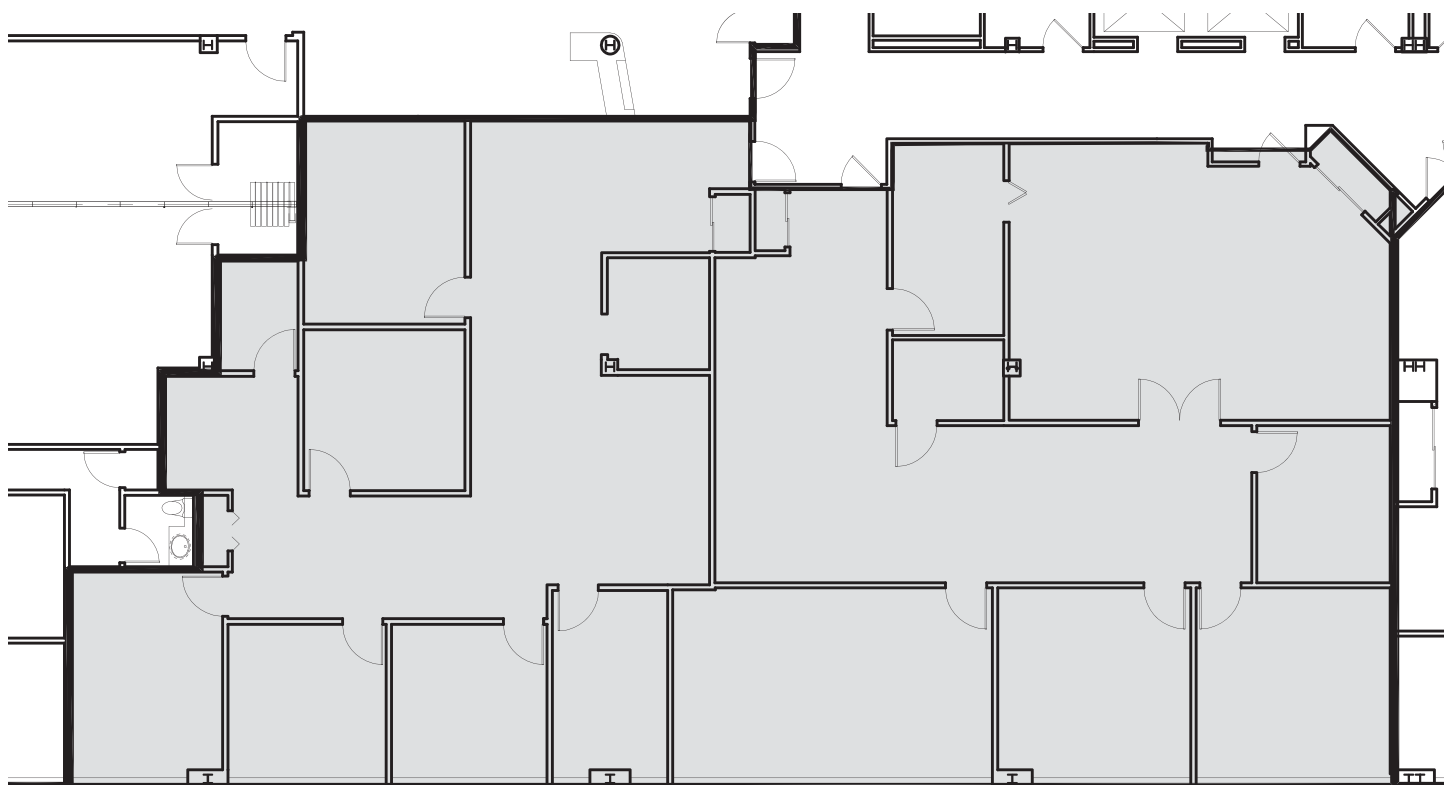


DIAMOND
PROPERTIES

OFFICE BUILDING

100 S. Bedford Rd. | Mt. Kisco, NY

Space C: Third Floor (5,533 SF)



Key Plan, Third Floor



For more information, visit
diamondproperties.com
or contact:

TED GROGAN

914-773-6264
tgrogan@dpmgt.com

MARK BLANDFORD

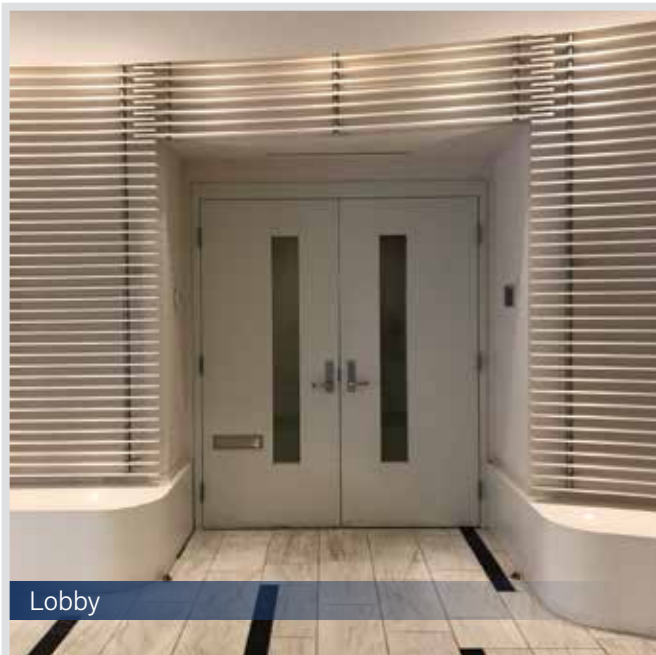
914-773-6242
mark@dpmgt.com



DIAMOND
PROPERTIES

OFFICE BUILDING

100 S. Bedford Rd. | Mt. Kisco, NY



Lobby



Kitchen



Office Spaces



Outdoor Seating Area

For more information, visit
diamondproperties.com
or contact:

TED GROGAN

914-773-6264
tgrogan@dpmgt.com

MARK BLANDFORD

914-773-6242
mark@dpmgt.com

The information contained herein has been obtained through sources deemed reliable but cannot be guaranteed as to its accuracy. Any information of special interest should be obtained through independent verification.