



DIAMOND
PROPERTIES

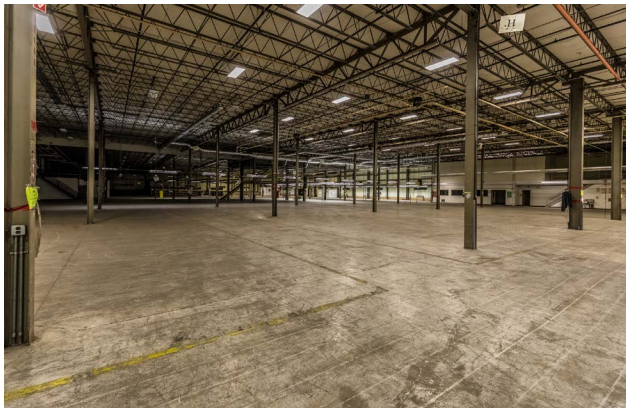
INDUSTRIAL WAREHOUSE

511 Fishkill Ave. | Beacon, NY



SPACE FEATURES

- Prime Industrial Warehouse & Distribution
- 3 loading docks (6 potential) and 1 drive-in
- 23 ft clear ceilings
- Ample Parking



For more information about features & amenities, visit dpmgt.com.

AVAILABLE SPACE

WAREHOUSE/DISTRIBUTION:
32,400 SF - 66,696 SF
\$9.50 NNN

Prime Industrial warehouse and distribution building on NYS Route 52, (Fishkill Avenue). The location is in close proximity to I84, I87, NYS Route 9, the Taconic State PKWY and Stewart International Airport.

For more information, visit dpmgt.com or contact:

Mark Blandford

914-773-6242
mark@dpmgt.com

Ted Grogan

914-773-6264
tgrogan@dpmgt.com

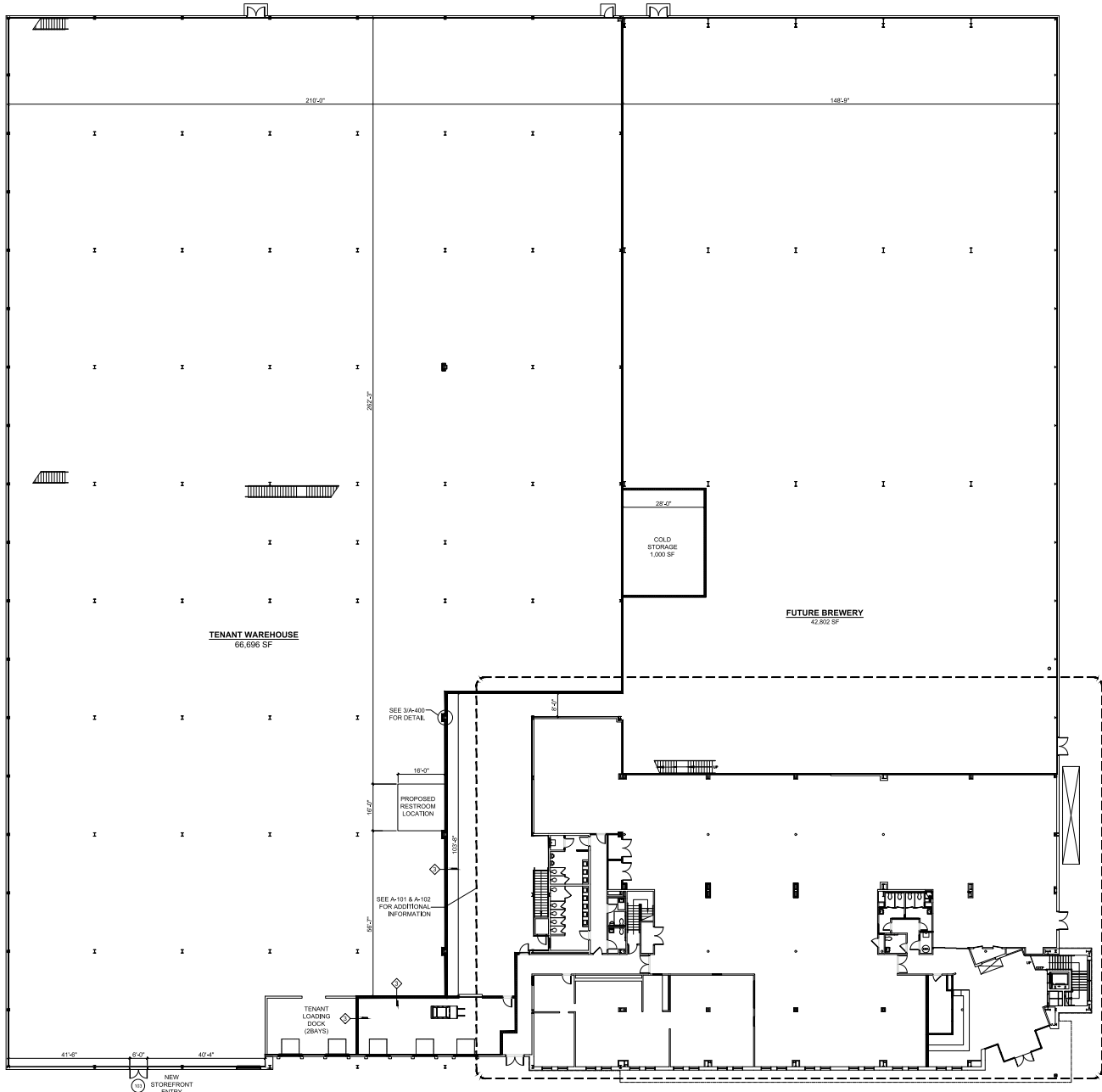


DIAMOND PROPERTY
MANAGEMENT

INDUSTRIAL WAREHOUSE

511 Fishkill Ave. | Beacon, NY

Floor Plan



For more information, visit
dpmgt.com or contact:

Mark Blandford
914-773-6242
mark@dpmgt.com

Ted Grogan
914-773-6264
tgrogan@dpmgt.com

The information contained herein has been obtained through sources deemed reliable but cannot be guaranteed as to its accuracy. Any information of special interest should be obtained through independent verification.

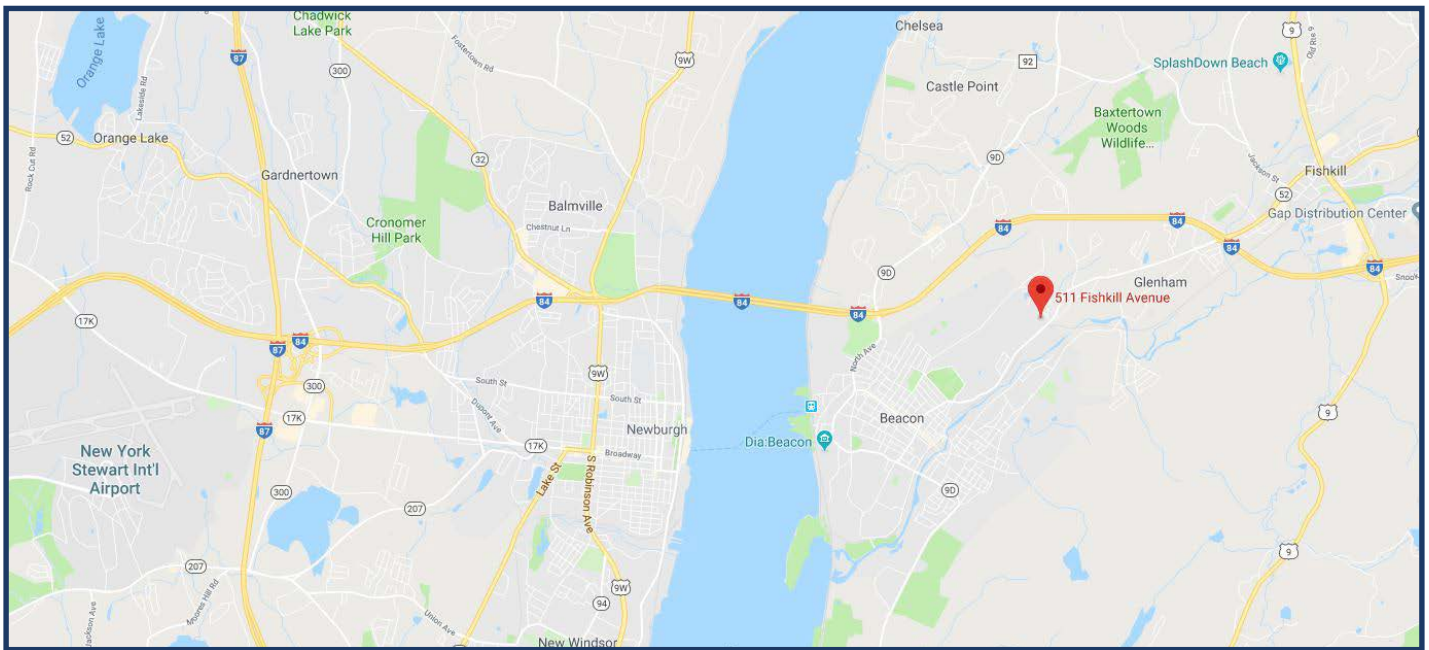


DIAMOND PROPERTY
MANAGEMENT

INDUSTRIAL WAREHOUSE

511 Fishkill Ave. | Beacon, NY

Area Map



For more information, visit
dpmgt.com or contact:

Mark Blandford
914-773-6242
mark@dpmgt.com

Ted Grogan
914-773-6264
tgrogan@dpmgt.com

The information contained herein has been obtained through sources deemed reliable but cannot be guaranteed as to its accuracy. Any information of special interest should be obtained through independent verification.