



DIAMOND
PROPERTIES

OFFICE/MEDICAL SPACE

666 Lexington Ave. | Mt. Kisco, NY



BUILDING FEATURES

- Class A Offices
- Office or Medical Use
- Move-in Condition
- Built to Suit Offices
- 24/7 Access
- Near I-684, Saw Mill River Parkway, Metro North Train Station, & Downtown Mt. Kisco

For more information about features & amenities, visit diamondproperties.com

AVAILABLE SPACE

2nd Floor 2,320 SF

POSSESSION

Immediate

ASKING RATE

\$32.50 Gross



**BEST COMMERCIAL
PROPERTY MANAGEMENT**



For more information, visit diamondproperties.com or contact:

TED GROGAN

914-773-6264

tgrogan@dpmgt.com

MARK BLANDFORD

914-773-6242

mark@dpmgt.com

The information contained herein has been obtained through sources deemed reliable but cannot be guaranteed as to its accuracy. Any information of special interest should be obtained through independent verification.



DIAMOND
PROPERTIES

OFFICE/MEDICAL SPACE

666 Lexington Ave. | Mt. Kisco, NY



PROPERTY OVERVIEW

666 Lexington Ave delivers a professional and modern impression with our newly renovated lobby, façade, and parking lot with electric charging stations. It is also near Mount Kisco's numerous upscale shops and eateries. Zoned for medical, office and retail.

LOCATION OVERVIEW

Ideally located at the cross roads of routes of 117 and 128, minutes to the MTA, I-684, and Saw Mill Parkway.

For more information, visit
diamondproperties.com or contact:

TED GROGAN

914-773-6264
tgrogan@dpmgt.com

MARK BLANDFORD

914-773-6242
mark@dpmgt.com

The information contained herein has been obtained through sources deemed reliable but cannot be guaranteed as to its accuracy. Any information of special interest should be obtained through independent verification.



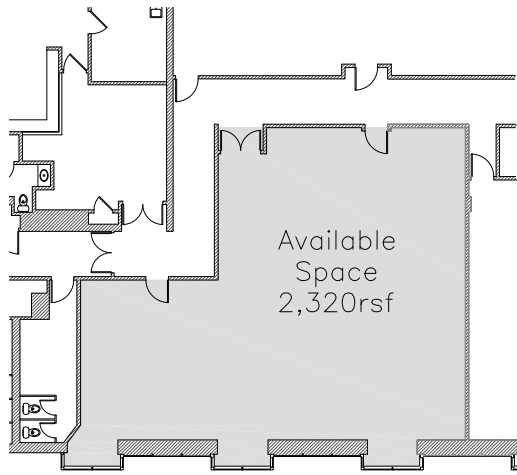
DIAMOND
PROPERTIES

OFFICE/MEDICAL SPACE

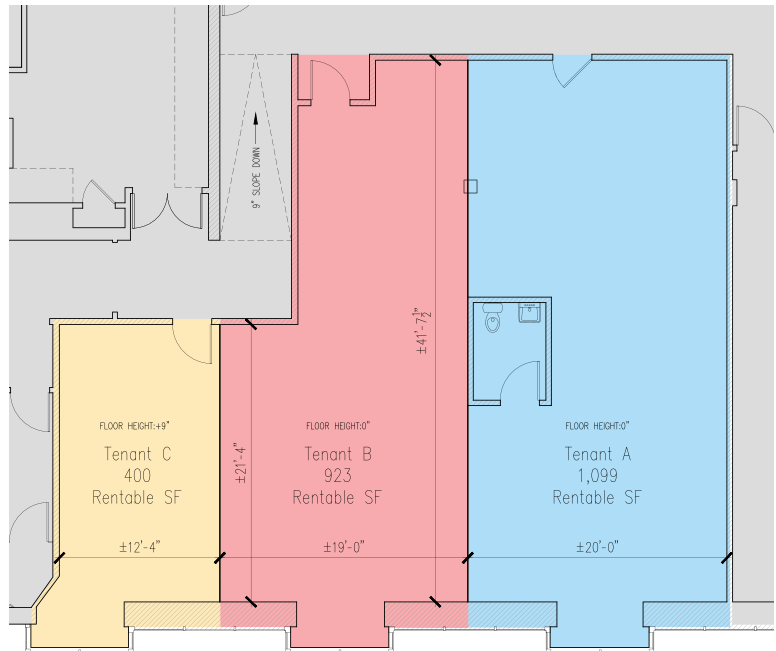
666 Lexington Ave. | Mt. Kisco, NY

SECOND FLOOR

Suite 207: 2,320 Rentable SF



Space is divisible



For more information, visit
diamondproperties.com or contact:

TED GROGAN

914-773-6264
tgrogan@dpmgt.com

MARK BLANDFORD

914-773-6242
mark@dpmgt.com

The information contained herein has been obtained through sources deemed reliable but cannot be guaranteed as to its accuracy. Any information of special interest should be obtained through independent verification.