



DIAMOND PROPERTIES

RETAIL LOCATION

444 Saw Mill River Rd. | Elmsford, NY



BUILDING FEATURES

- Prime Retail Location
- Abundant Parking
- Average Daily Traffic Count 17,370
- Strong Co-Tenants, Including Captain Lawrence Brewery, Blue Line Tactical, & Safe Haven Storage & close to Sport Time USA
- Easily accessed from I-287, Saw Mill Pkwy, Sprain Pkwy and Route 100

AVAILABLE SPACE

Retail: 2,174 SF
Storage: 1732 SF

Asking Rate:
Retail: \$30 SF NNN
Storage: \$16 SF NNN



For more information, visit diamondproperties.com or contact:

MARK BLANDFORD

914-773-6242
mark@dpmgt.com

TED GROGAN

914-773-6264
tgrogan@dpmgt.com

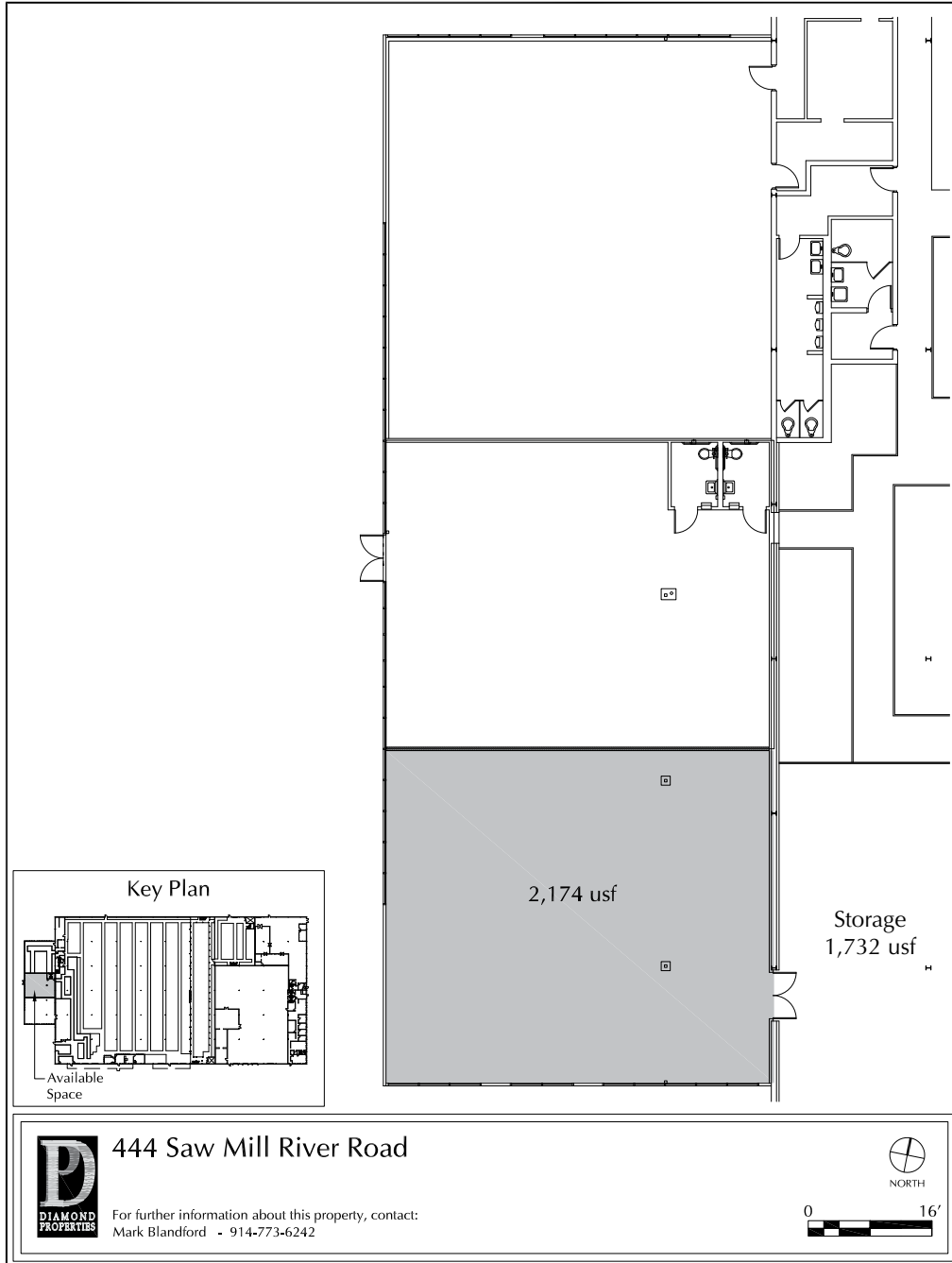
The information contained herein has been obtained through sources deemed reliable but cannot be guaranteed as to its accuracy. Any information of special interest should be obtained through independent verification.



DIAMOND PROPERTIES

RETAIL LOCATION

444 Saw Mill River Rd. | Elmsford, NY



444 Saw Mill River Road, Elmsford, NY

For more information, visit
diamondproperties.com or
contact:

MARK BLANDFORD

914-773-6242
mark@dpmgt.com

TED GROGAN

914-773-6264
tgrogan@dpmgt.com

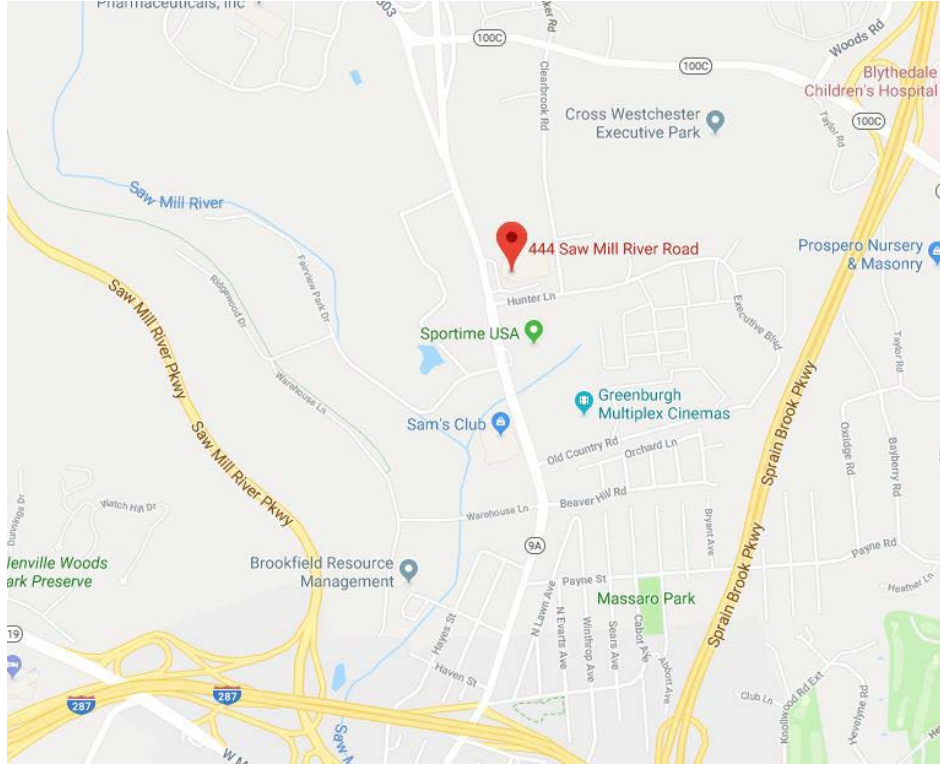
The information contained herein has been obtained through sources deemed reliable but cannot be guaranteed as to its accuracy. Any information of special interest should be obtained through independent verification.



DIAMOND PROPERTIES

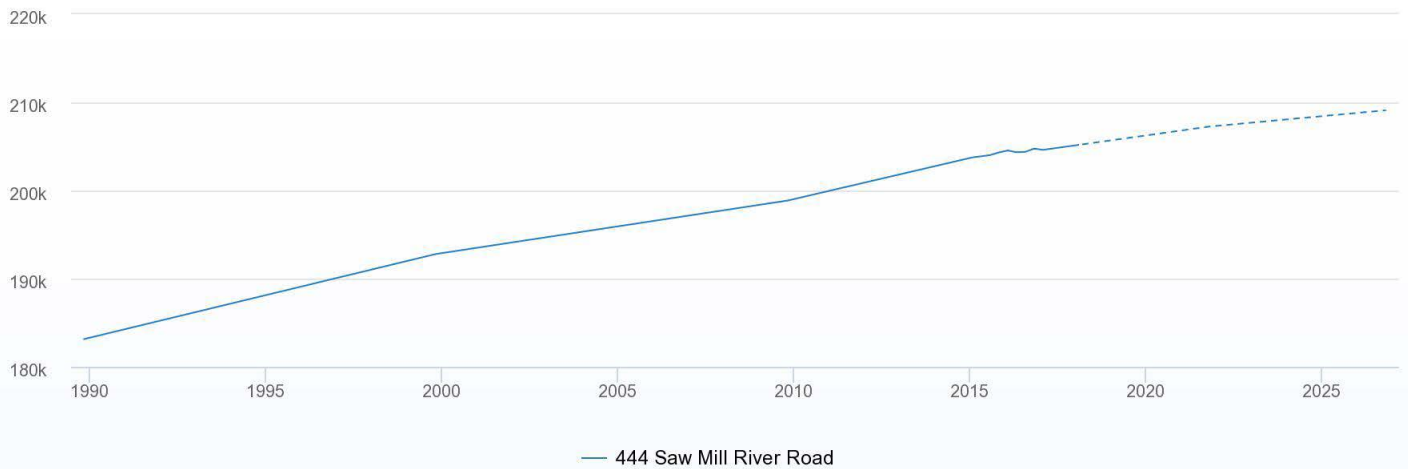
RETAIL LOCATION

444 Saw Mill River Rd. | Elmsford, NY



Residential Population (15 minute drivetime)

Population residing in single-family or multi-family homes.



For more information, visit diamondproperties.com or contact:

MARK BLANDFORD

914-773-6242
mark@dpmgt.com

TED GROGAN

914-773-6264
tgrogan@dpmgt.com